



Suzhou Super Clean Technology Co.,Ltd

www.sctcleanroom.com admin@sctcleanroom.com



Started from manufacturing clean room fan in 2005, Suzhou Super Clean Technology Co., Ltd(SCT) has already become a famous clean room brand in domestic market. We are a high-tech enterprise integrated with R&D, design, manufacturing and sales for a wide range of clean room products such as clean room panel, clean room door, hepa filter, fan filter unit, pass box, air shower, clean bench, weighing booth, clean booth, led panel light, etc. Additionally, we are a professional clean room project turnkey solution provider including planning, design, production, delivery, installation, commissioning, validation and training. We mainly focus on 6 clean room application such as pharmaceutical, laboratory, electronic , hospital, food and medical device. Currently, we have completed overseas projects in USA , New Zealand, Ireland, Poland, Latvia, Thailand, Philippines, Argentina, Senegal, etc. We have been authorized by ISO 9001 and ISO 14001 management system and obtained plenty of patents and CE and CQC certificates, etc. We have advanced production and testing equipment and engineering R&D center and a batch of middle and high ranking engineers to provide strong technical support. Welcome to contact us if you have any inquiry!

Project Display



Project Details



Structure System

- Clean room wall and ceiling panel
- Clean room door and window
- Epoxy/PVC/High-raised floor
- Connector profile and hanger

HVAC System

- Air handling unit(AHU)
- HEPA filter and return air outlet
- Air duct
- Insulation material



Electrical System

- Clean room light
- Switch and socket
- Wire and cable
- Power distribution box

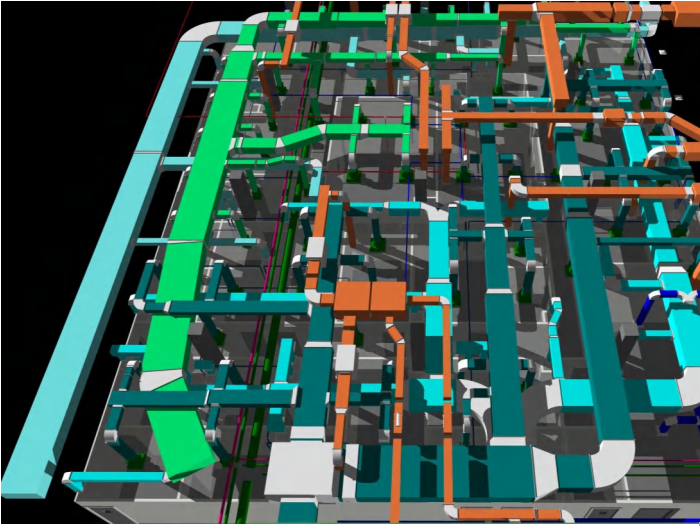


Control System

- Air cleanliness
- Temperature and relative humidity
- Air flow
- Differential pressure



Turnkey Solution



Planning & Design

We can provide professional advice and best engineering solution.



Production & Delivery

We can provide top quality product and do full inspection before delivery.



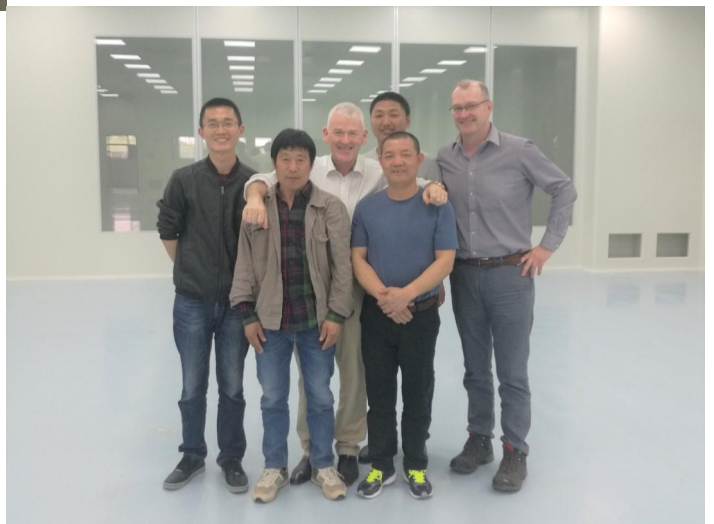
Installation & Commissioning

We can provide overseas teams to make sure successful operation.





Validation & Training

We can provide testing instruments to achieve validated standard.



Application Cases

No.	Country	National Flag	Project Name	International Standard
1	Ireland		Sterile Packing Cleanroom	ISO 7/8
2	Denmark		Cannabis Cleanroom	/
3	Argentina		Pharmaceutical Cleanroom	/
4	Ireland		Syringe Production Cleanroom	Class C/D
5	Paraguay		Modular Operation Room	ISO 5/7/8
6	New Zealand		Chemical Cleanroom	/
7	America		Flower Room	/
8	Portugal		Medical Packing Cleanroom	ISO 7
9	Thailand		Hospital Isolation Room	Class 10000
10	Ukraine		Laboratory	Class C

Related Products



Clean Room Panel



Clean Room Door



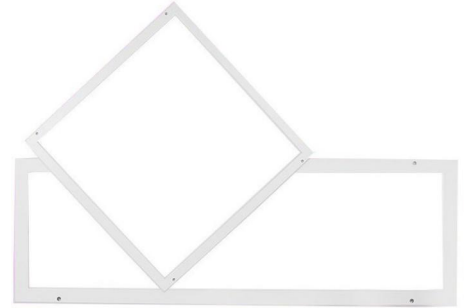
Airtight Sliding Door



Roller Shutter Door



Clean Room Window



LED Panel Light



HEPA Filter



HEPA Box



Fan Filter Unit



Pass Box



Clean Bench



Air Shower



Weighing Booth



Wash Sink



Air Handling Unit

Clean Room Panel



- Meet with GMP standard, flush with door, etc;
- Dust free and airtight, easy to clean;
- Flexible cutout for light, hepa filter, etc;
- Widely used in clean room industry, etc
- Prefabricated and modular, easy to install;
- Loadbearing and walkable, easy to maintenance.

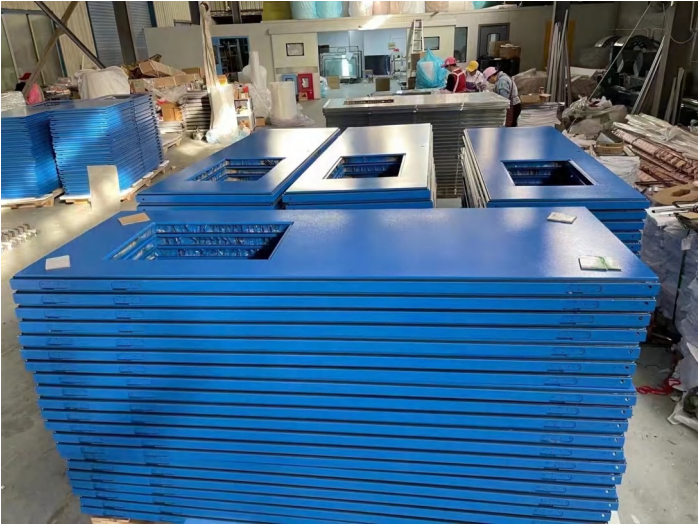


Technical Parameter

Model	SCT-P980	SCT-P1180
Width(mm)	980	1180
Height(mm)	≤6000	
Thickness(mm)	50/75/100(Optional)	
Surface Sheet	0.5mm Powder Coated Steel Sheet/0.5mm Stainless Steel Sheet/ 3mm HPL Sheet(Optional)	
Core Material	Rockwool/PU/Magnesium/etc(Optional)	
Connector	"+"Type Aluminum Profile/Female&Male Type Aluminum Profile(Optional)	

Remark: we can customize all products as your requirements.

Clean Room Door



- Meet with GMP standard, flush with wall;
- Dust free and airtight, easy to clean;
- Additional fittings optional;
- Door material and frame thickness optional;
- Self-supporting and dismantable, easy to install;
- Widely used in clean room industry, etc.



Technical Parameter

Model	SCT-D900	SCT-D1200	SCT-D1500	SCT-D1800
Width(mm)	900	1200(300+900)	1500	1800
Height(mm)	≤2400			
Frame Thickness(mm)	The Same as Wall Thickness.			
Door Material	Powder Coated Steel Plate/Stainless Steel/HPL+Aluminum Profile(Optional)			
View Window Material	5mm Thickness Tempered Glass(Right and Round Angle Optional)			
Color	Blue/Grey White/Red/etc(Optional)			
Additional Fittings	Door Closer, Interlock Device, Access Control, etc			

Remark: we can customize all products as your requirements.

Airtight Sliding Door



- Dust free and airtight, easy to clean;
- Automatic and manual sliding door optional ;
- Smooth guide rail to ensure safe running;
- Widely used in hospital, etc;
- Powder coated and stainless steel door leaf optional;
- Efficient motor to ensure excellent performance.



Technical Parameter

Model	SCT-SD900	SCT-SD1500	SCT-SD1800
Width(mm)	900	1500	1800
Height (mm)	≤2400		
Door Leaf Thickness(mm)	40		
Door Material	Powder Coated Steel Plate/Stainless Steel/HPL(Optional)		
View Window Material	Double 5mm Tempered Glass(Right and Round Angle Optional)		
Color	Blue/White/Green/etc(Optional)		
Control Mode	Automatic/Manual(Optional)		
Power Supply	AC220/110V, Single Phase, 50/60Hz(Optional)		

Remark: we can customize all products as your requirements.

Roller Shutter Door



- Have high-speed dedicated motor and high-precision servo device;
- Use manual switch and radar sensor control mode;
- Infrared photoelectric protective switch to ensure traffic safety;
- Have position limit switch and malfunction recovery function;
- Widely used in clean room industry, etc.

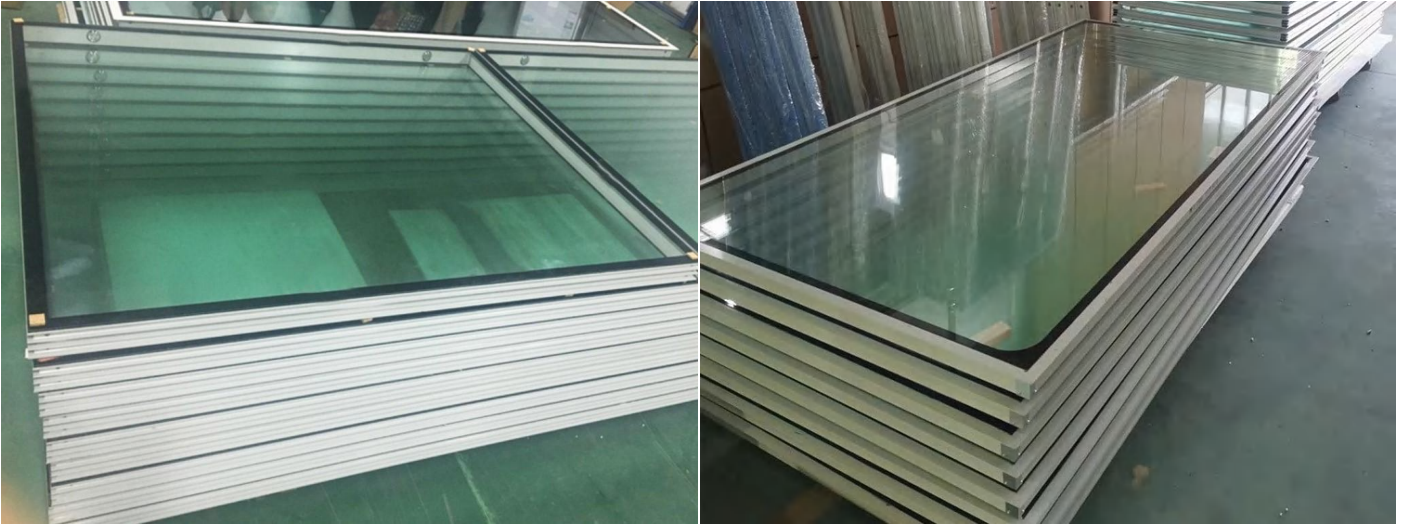


Technical Parameter

Model	SCT-RD
Size	Customized
Color	Blue/Yellow/Red/Grey/etc(Optional)
Opening Speed(m/s)	0.6~1.5(Adjustable)
Motor Position	Left-side/Right-side(Optional)
Frame Material	Powder Coated Steel Plate/Stainless Steel(Optional)
Door Cloth	1.2mm PVC Cloth
Power Supply	AC220/110V, Single Phase, 50/60Hz(Optional)

Remark: we can customize all products as your requirements.

Clean Room Window



- Flush with wall panel;
- 5mm double tempered glass;
- Right and round angle optional;
- Widely used in clean room industry, etc;
- Aluminum profile frame;
- Dry agent and nitrogen as infill optional.



Technical Parameter

Model	SCT-W980	SCT-W1180
Width (mm)	980	1180
Height (mm)	≤2400	
Thickness (mm)	50(Customized if required)	
Material	5mm double tempered glass and aluminum profile frame	
Infill	Drying agent/Nitrogen(Optional)	
Shape	Right angle/Round angle(Optional)	
Connector	“+” Shaped aluminum profile	

Remark: we can customize all products as your requirements.

LED Panel Light



- CQC qualified, widely used in cleanroom, etc;
- Dust free and bright, easy to clean;
- Without infrared, radiation and heat effect;
- Rectangular and square type optional;
- Ultra-thin and lightweight, easy to install;
- Long service life and energy-saving.

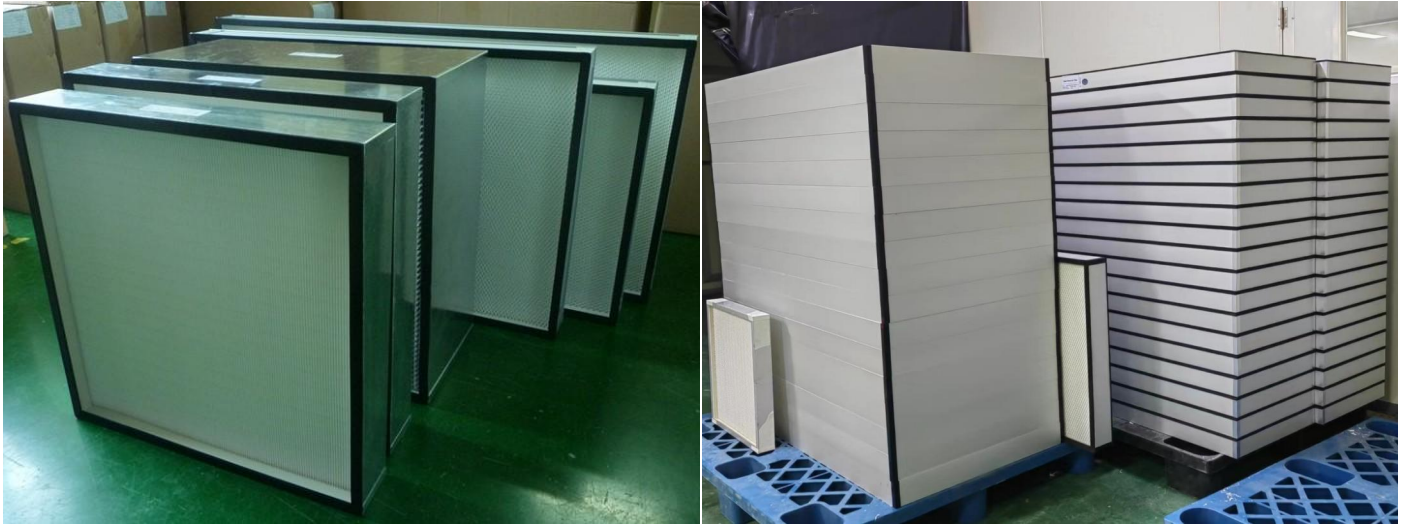


Technical Parameter

Model	SCT-L2'*1'	SCT-L2'*2'	SCT-L4'*1'	SCT-L4'*2'
Dimension(W*D*H)(mm)	600*300*9	600*600*9	1200*300*9	1200*600*9
Lamp Body	Aluminum Profile			
Color Temperature(k)	6500			
Rated Power(W)	24~48			
Working Temperature(°C)	-40~60			
Working Lifetime(h)	30000			
Power Supply	AC220/110V, Single Phase, 50/60Hz(Optional)			

Remark: we can customize all products as your requirements.

HEPA Filter



- CE certificated, widely used in pharmaceuticals, etc;
- Use low volatile fiberglass as filter material;
- Aluminum profile and stainless steel frame optional;
- Compact structure and zero leakage;
- Uniform air velocity, low resistance, etc;
- 2~3 years' service life in normal air environment.



Technical Parameter

Model	Size(mm)	Depth(mm)	Initial Resistance (Pa)	Final Resistance (Pa)	Filter Class	Filter Material	Frame Material
SCT-HF01	305*305	50/70/90/ 120/150/220	≤180	400	H13/H14/ U15/U16 (Optional)	Fiber- glass	Aluminum Profile/SS/ Galvanized Steel (Optional)
SCT-HF02	484*484						
SCT-HF03	610*305						
SCT-HF04	610*610						
SCT-HF05	915*610						
SCT-HF06	1220*610						

Remark: we can customize all products as your requirements.

HEPA Box



- Anti-static powder coated steel plate case;
- Top and side air inlet optional;
- Compact structure and reliable sealing;
- Widely used in pharmaceuticals, etc;
- Square and round flange optional;
- Lightweight and easy for installation.



Technical Parameter

Model	External Dimension (W*D*H) (mm)	HEPA Filter Dimension(mm)	Rated Air Volume (m3/h)	Air Inlet Size (W*D)(mm)
SCT-HB01	370*370*450	320*320*220	500	200*200
SCT-HB02	534*534*450	484*484*220	1000	320*200
SCT-HB03	660*660*380	610*610*150	1000	320*250
SCT-HB04	680*680*450	630*630*220	1500	320*250
SCT-HB05	965*660*380	915*610*150	1500	500*250
SCT-HB06	1310*680*450	1260*630*220	3000	600*250

Remark: we can customize all products as your requirements.

Fan Filter Unit



- CE certificated, widely used in laboratory, etc;
- AC motor and EC motor optional;
- Single control and group control optional;
- Efficient motor and long service life HEPA filter;
- Additional pre-filter optional;
- Strong strength and elegant appearance.



Technical Parameter

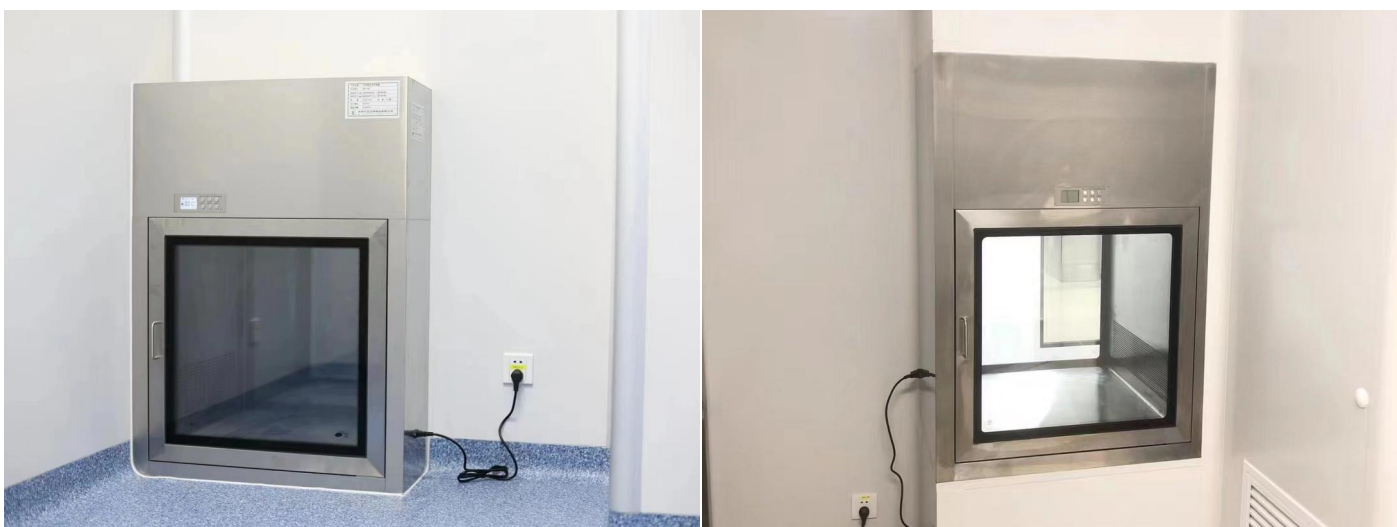
Model	SCT-FFU-2'*2'	SCT-FFU-2'*4'	SCT-FFU-4'*4'
Dimension(W*D*H)(mm)	575*575*300	1175*575*300	1175*1175*350
HEPA Filter(mm)	570*570*70,H14	1170*570*70,H14	1170*1170*70,H14
Primary Filter(mm)	395*395*22,G4(Optional)		
Air Volume(m3/h)	500	1000	2000
Air Velocity(m/s)	0.45±20%		
Control Mode	AC motor:3 gear/EC motor:stepless speed(Optional)		
Case Material	Galvanized Steel Plate/Powder Coated Steel Plate/Stainless Steel(Optional)		
Power Supply	AC220/110V,Single Phase,50/60Hz(Optional)		

Remark: we can customize all products as your requirements.

Pass Box



- Meet with GMP standard, flush with wall;
- Static and dynamic type optional;
- Lighting and UV lamp optional;
- Widely used in pharmaceuticals, etc;
- Mechanical and electronic interlock optional;
- High-quality case material and efficient component.



Technical Parameter

Model	SCT-PB-M555	SCT-PB-M666	SCT-PB-S555	SCT-PB-S666	SCT-PB-D555	SCT-PB-D666
External Dimension (W*D*H) (mm)	685*570*590	785*670*690	700*570*650	800*670*750	700*560*1050	800*660*1150
Internal Dimension (W*D*H) (mm)	500*500*500	600*600*600	500*500*500	600*600*600	500*500*500	600*600*600
Type	Static(without HEPA filter)			Dynamic(with HEPA filter)		
Interlock Type	Mechanical Interlock/Electronic Interlock(Optional)					
Lamp	Lighting Lamp/UV Lamp(Optional)					
Case Material	Powder Coated Steel Plate Outside and SUS304 Inside/Full SUS304(Optional)					
Power Supply	AC220/110V,Single Phase,50/60Hz(Optional)					

Remark: we can customize all products as your requirements.

Clean Bench



- Horizontal and vertical laminar flow optional;
- Mini Desktop type optional;
- LCD screen to display working status;
- Widely used in laboratory, etc;
- Full stainless steel type optional;
- Efficient fan and long service life HEPA filter.



Technical Parameter

Model	SCT-CB-H1000	SCT-CB-H1500	SCT-CB-V1000	SCT-CB-V1500
Type	Horizontal Laminar Flow		Vertical Laminar Flow	
External Dimension (W*D*H) (mm)	1000*720*1420	1500*720*1420	1000*750*1620	1500*750*1620
Internal Dimension (W*D*H) (mm)	950*520*610	1450*520*610	860*700*520	1340*700*520
Cleanliness	ISO 5(Class 100)			
Air Velocity(m/s)	0.45±20%			
Power(W)	370	750	370	750
Applicable Person	1	2	1	2
Material	Power Coated Steel Plate Case and Stainless Steel Work Table/Full SUS304 (Optional)			
Power Supply	AC220/110V,Single Phase,50/60Hz(Optional)			

Remark: we can customize all products as your requirements.

Air Shower



- CE certificated, widely used in food industry, etc;
- Intelligent microcomputer voice controller;
- Infrared photoelectric automatic induction switch;
- High air velocity to ensure dust removal effect;
- LCD screen to display working status;
- Efficient fan and long service life HEPA filter.



Technical Parameter

Model	SCT-AS-S1000	SCT-AS-D1500
External Dimension (W*D*H)(mm)	1300*1000*2100	1300*1500*2100
Internal Dimension (W*D*H)(mm)	800*900*1950	800*1400*1950
Air Velocity(m/s)	≥ 25	
HEPA Filter	H14,570*570*70mm, 2pcs	H14,570*570*70mm, 2pcs
Nozzle(pcs)	12	18
Power(kw)	2	2.5
Applicable Person	1	2
Door Material	Powder Coated Steel Plate/SUS304(Optional)	
Case Material	Powder Coated Steel Plate/Full SUS304(Optional)	
Power Supply	AC380/220V, 3 Phase, 50/60Hz(Optional)	

Remark: we can customize all products as your requirements.

Weighing Booth



- CE certificated, widely used in pharmaceuticals, etc;
- Negative pressure and vertical laminar flow;
- Efficient motor and long service life HEPA filter;
- VFD and PLC control optional;
- 3-level filter system, achieve ISO 5 cleanliness;
- Certified high-quality SUS304 material.



Technical Parameter

Model	SCT-WB1300	SCT-WB1700	SCT-WB2400
External Dimension (W*D*H) (mm)	1300*1300*2450	1700*1600*2450	2400*1800*2450
Internal Dimension (W*D*H) (mm)	1200*800*2000	1600*1100*2000	2300*1300*2000
Cleanliness	ISO 5(Class 100)		
Air Velocity(m/s)	0.45±20%		
Exhaust Air Volume(m3/h)	250	360	900
Supply Air Volume(m3/h)	2500	3600	9000
Max Power Consumption(kw)	≤1.5	≤3	≤3
Control Mode	VFD/PLC(Optional)		
Case Material	SUS304		
Power Supply	AC380/220V, 3 phase, 50/60Hz(Optional)		

Remark: we can customize all products as your requirements.

Wash Sink



- Certified SUS304 material and nice appearance;
- Dedicated mirror and energy-saving lamp;
- Arc edge and seamless welding, easy to clean;
- Widely used in hospital, etc;
- Medical and normal usage optional;
- Automatic sensor faucet and soap dispenser.



Technical Parameter

Model	SCT-WS800	SCT-WS1500	SCT-WS1800	SCT-WS500
Dimension(W*D*H)(mm)	800*600*1800	1500*600*1800	1800*600*1800	500*420*780
Case Material	SUS304			
Sensor Faucet(pcs)	1	2	3	1
Soap Dispenser(pcs)	1	1	2	/
Light(pcs)	1	2	3	/
Mirror(pcs)	1	2	3	/
Water Outlet Device	20~70℃ Hot water device			/

Remark: we can customize all products as your requirements.

Air Handling Unit



- Modular structure and easy to install;
- Low noise and energy efficiency;
- Tidy surface and smooth edge;
- Excellent airtightness performance;
- Intelligent and automatic control;
- Smooth running and high efficiency.



Technical Parameter

Model	SCT-AHU3000	SCT-AHU4000	SCT-AHU5000	SCT-AHU6000	SCT-AHU8000	SCT-AHU10000
Air Flow(m ³ /h)	3000	4000	5000	6000	8000	10000
Direct Expansion Section Length(mm)	500	500	600	600	600	600
Coil Resistance(Pa)	125	125	125	125	125	125
Electric Reheater Power(KW)	10	12	16	20	28	36
Humidifier Capacity (Kg/h)	6	8	15	15	15	25
Temperature control range	Cooling: 20~26°C (±1°C) Heating: 20~26°C (±2°C)					
Humidity control range	Cooling: 45~65% (±5%) Heating: 45~65% (±10%)					
Power Supply	AC380/220V, single phase, 50/60Hz(Optional)					

Remark: we can customize all products as your requirements.